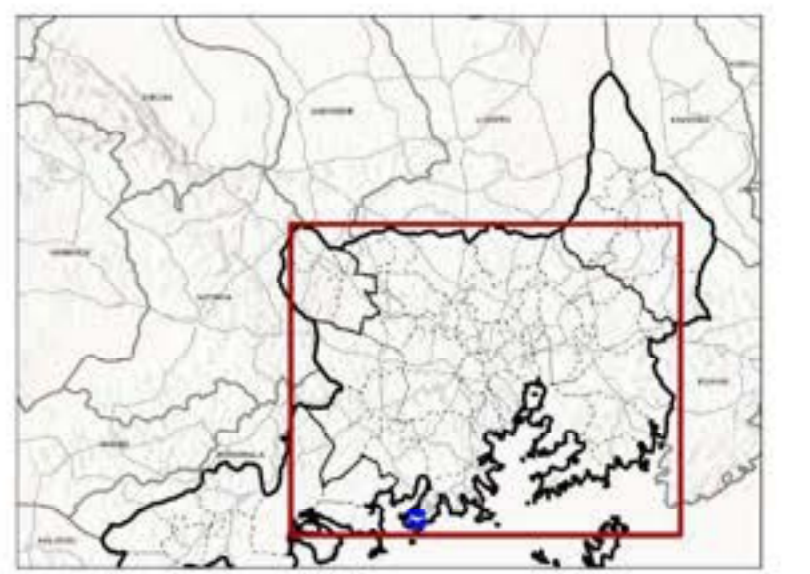
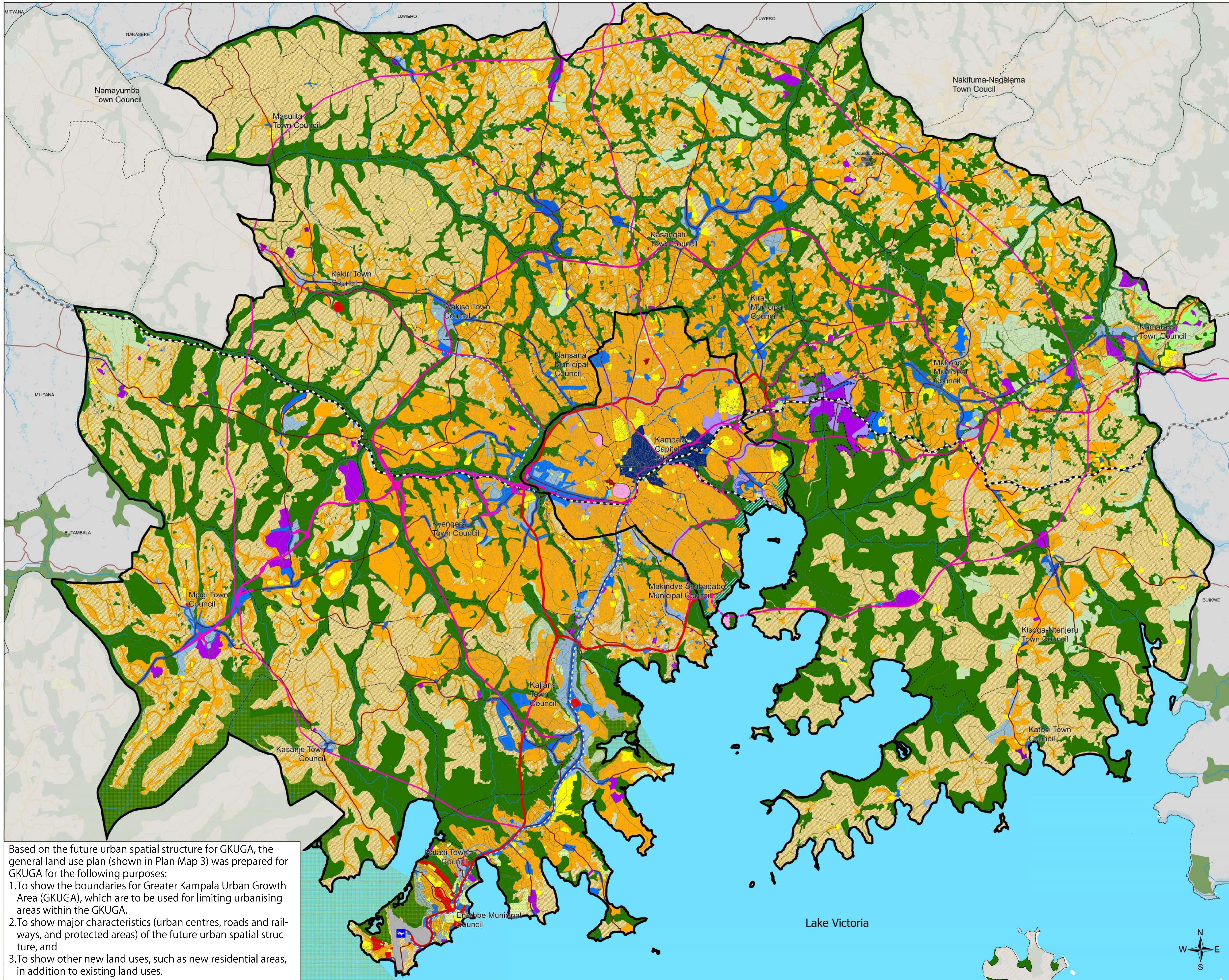


PLAN MAP 3

GKUGA General Land Use Plan (2024-2050)



Legend

- Local Councils
 - ✈ Entebbe Airport
 - Rivers
- Railway Network**
- - - - - Existing Railway Line
 - - - - - Proposed New Railway Line
- Road Network**
- Existing Expressways
 - New Expressways
 - National Road
 - District Roads
 - Other Roads
- Protected Areas**
- Ramsar Sites
 - Environmental
- Landuse Category**
- CBD
 - Commercial
 - Civic
 - Residential
 - Institutional
 - Mixed Use (Commercial and Industrial)
 - Mixed Use (Residential and Commercial)
 - Historic, Traditional and Cultural Zones
 - Industrial
 - New Residential Areas
 - Commercial Agriculture
 - Protected Water Front Zone
 - Infrastructure and Utilities
 - Open Space
 - Agriculture
 - Open Water

Based on the future urban spatial structure for GKUGA, the general land use plan (shown in Plan Map 3) was prepared for GKUGA for the following purposes:

- To show the boundaries for Greater Kampala Urban Growth Area (GKUGA), which are to be used for limiting urbanising areas within the GKUGA,
- To show major characteristics (urban centres, roads and railways, and protected areas) of the future urban spatial structure, and
- To show other new land uses, such as new residential areas, in addition to existing land uses.

Project:
 The Project for Integrated Urban Development Master Plan for Kampala Special Planning Area (GKMA-IUDMP)

Japan International Cooperation Agency (JICA)
 Oriental Consultants Global Co., Ltd
 Yachiyo Engineering Co., Ltd.
 PACET Corporation
 PASCO Corporation

Authority:
 Ministry of Kampala Capital City and Metropolitan Affairs

Drawing No:
 GKMA/GoU-MKCCMA/04/2024/002/3

Date: May, 2024 **Scale:** 1:80,000

0 2.5 5 10
 Km

This Scale is at A0 Paper Size

